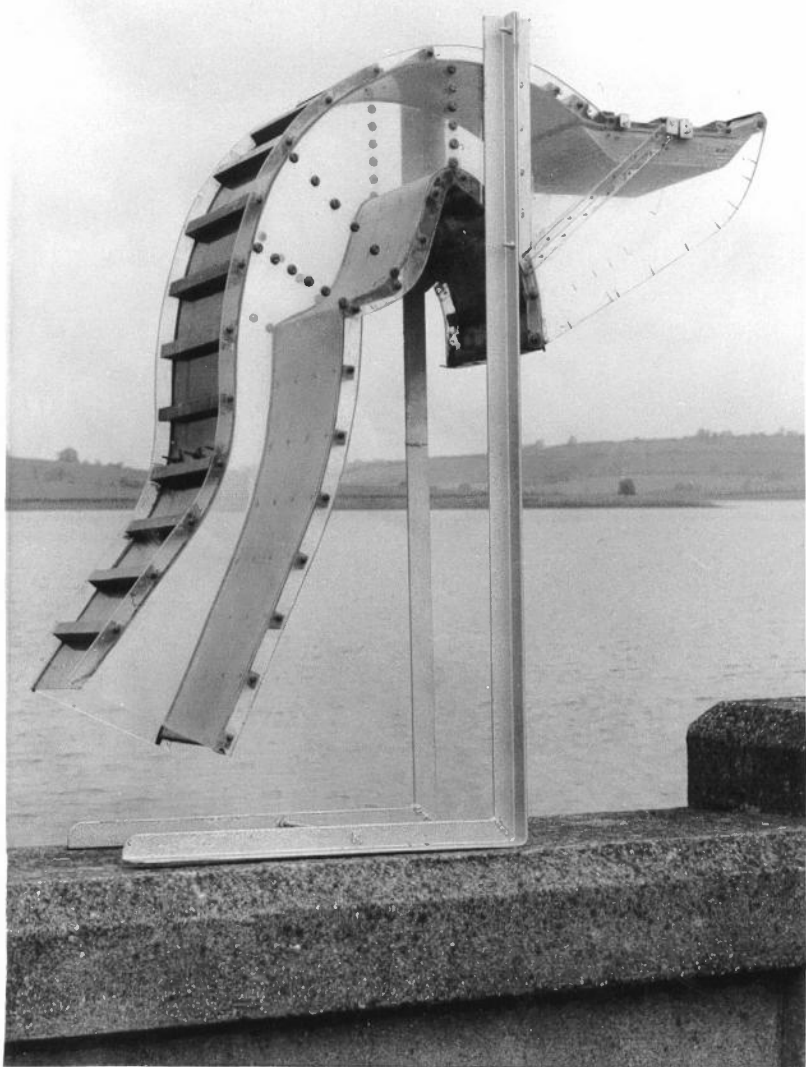


Syphon Model
Experiments at Blatherwycke





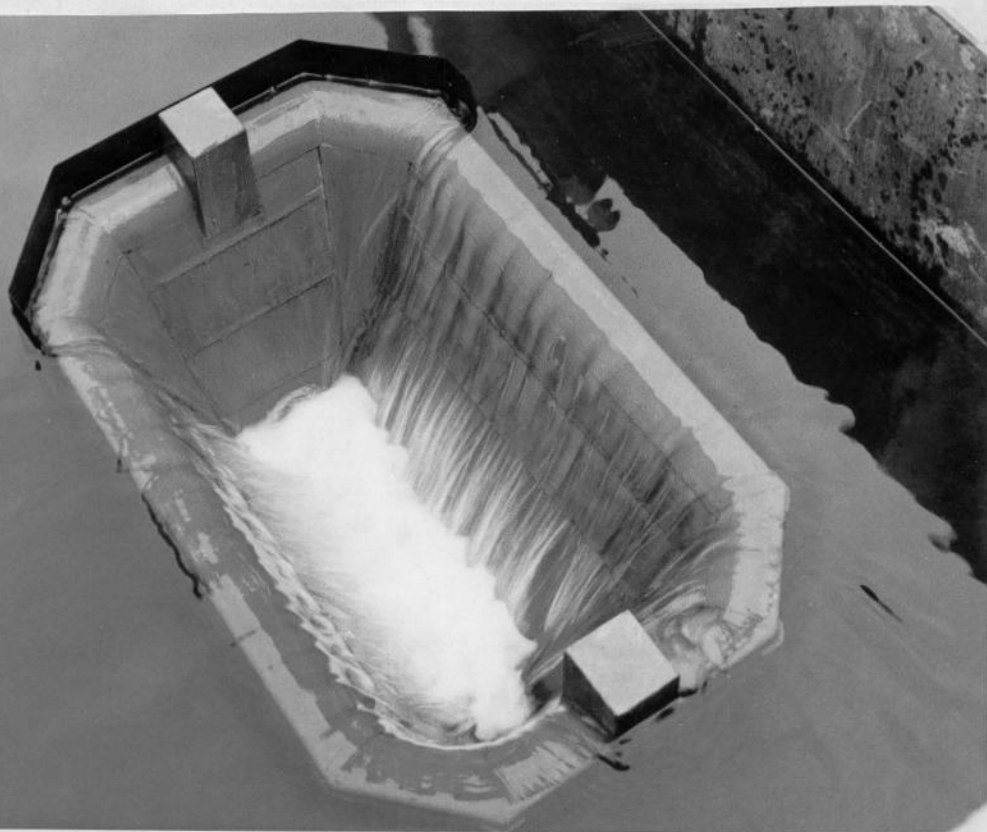
Syphon Model
Experiments continued



Syphon model at Blatherwycke with both side weirs running. The crest level of siphons, and weirs is the same and it looks as if much more water is coming out of the right hand weir, but this is only because the water is being shot across to the intrados by a ski jump. The lefthand weir is broad-crested. The photograph is of interest because about ten times as much water is going through the siphon than through the weirs. It also shows the uneven pattern of the siphon discharge, which was stopped when the apron was adjusted.

(Photo LA.437)

Flow of 1.10 cusecs (1965 cusecs) Back-up 0.86 ft



Flow of 0.69 cusecs (1234 cusecs) Tunnel not quite full



Flow of 0.17 cusecs (304 cusecs)

Tunnel not full

